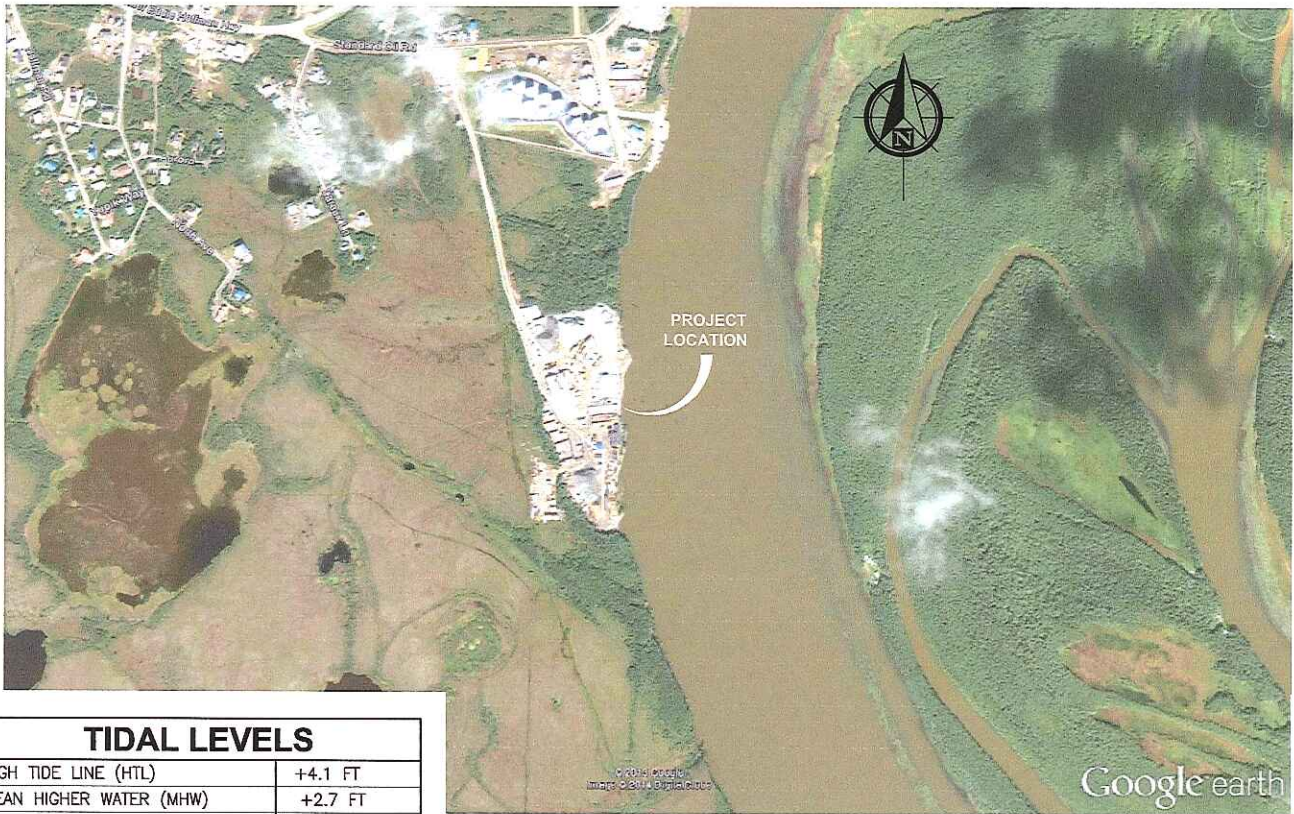
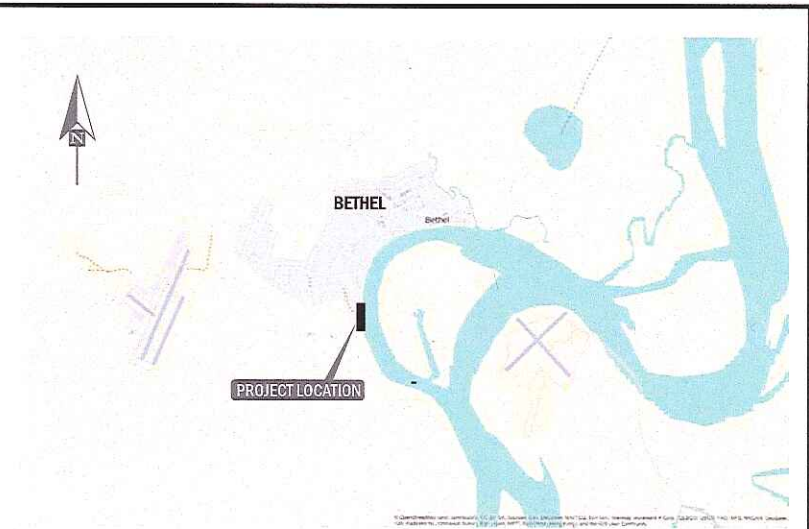


LOCATION MAP



TIDAL LEVELS	
HIGH TIDE LINE (HTL)	+4.1 FT
MEAN HIGHER WATER (MHW)	+2.7 FT
MEAN LOWER LOW WATER (MLLW)	+0.0 FT

PURPOSE:
SHEET PILE DOCK FOR EROSION PROTECTION, NAVIGATION SAFETY, AND FREIGHT TRANSFER.

DATUM: MLLW= 0.0

SEC.017 T8W R17W
LAT: 60.7784
LONG: -161.7786

VICINITY MAP

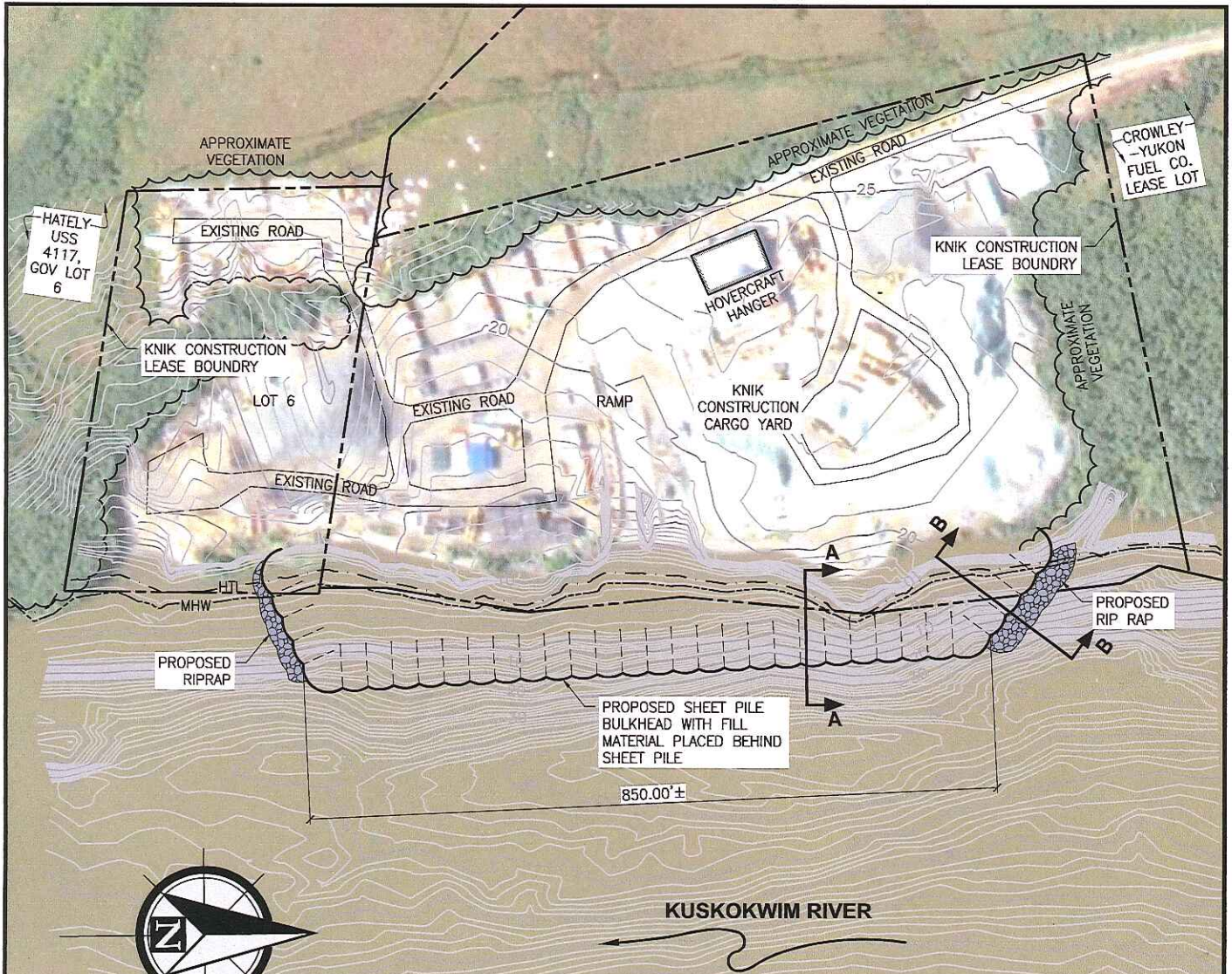
KNIK CONSTRUCTION CO. INC
6441 SOUTH AIRPARK PLACE
ANCHORAGE, AK 99502

01/31/14

**KNIK CONSTRUCTION
BETHEL YARD DOCK**

AT: BETHEL, AK
IN: KUSKOKWIM RIVER

SHEET 1 of 3



NOTE:
BATHYMETRY SURVEY PERFORMED OCTOBER 2013

QUANTITIES

	FILL (CY)	RIPRAP (CY)	FOOTPRINT (ACRE)
TOTAL	88,000	1,900	3.5
BELOW HTL	40,000	1,600	2.9
BELOW MHW	36,000	1,350	2.4

TIDAL LEVELS

HIGH TIDE LINE (HTL)	+4.1 FT
MEAN HIGHER WATER (MHW)	+2.7 FT
MEAN LOWER LOW WATER (MLLW)	+0.0 FT

PURPOSE:
SHEET PILE DOCK FOR EROSION PROTECTION, NAVIGATION SAFETY, AND FREIGHT TRANSFER.

DATUM: MLLW= 0.0
SEC.017 T8W R17W
LAT: 60.7784
LONG: -161.7786

SITE PLAN

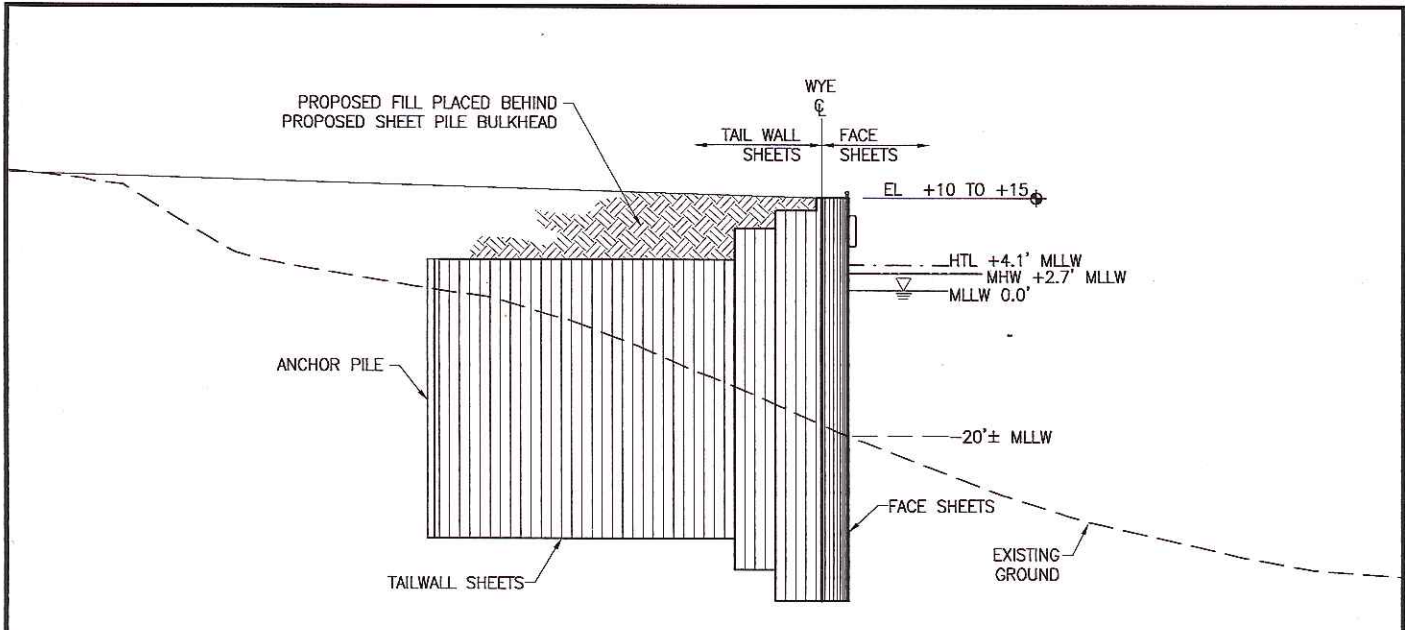
KNIK CONSTRUCTION CO. INC
6441 SOUTH AIRPARK PLACE
ANCHORAGE, AK 99502

01/31/14

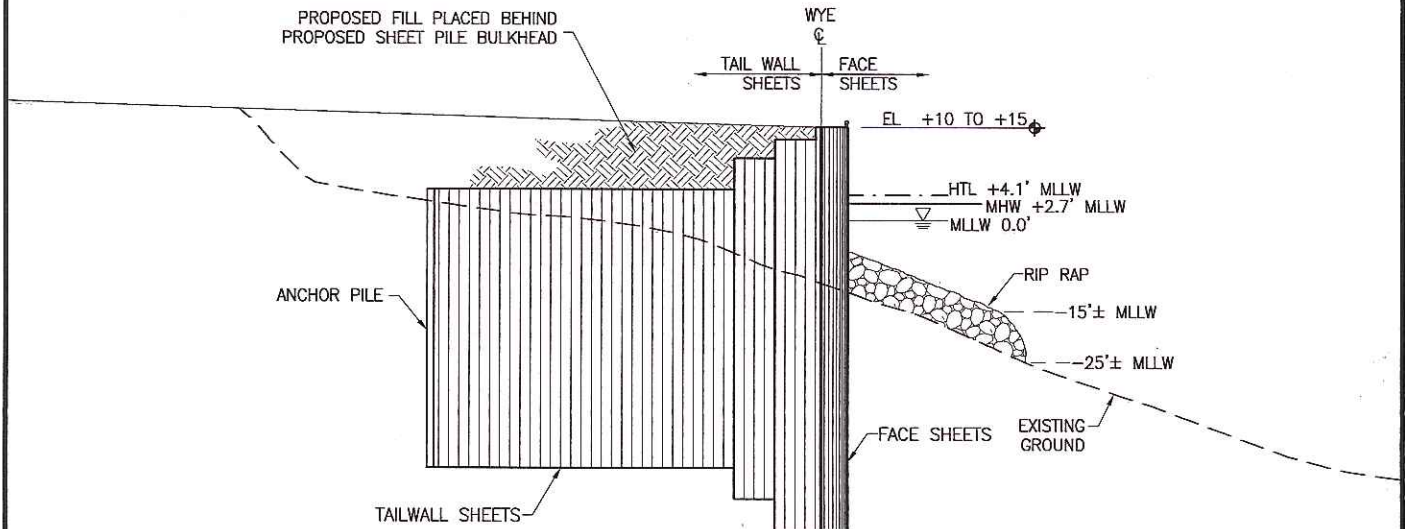
KNIK CONSTRUCTION BETHEL YARD DOCK

AT: BETHEL, AK
IN: KUSKOKWIM RIVER

SHEET 2 of 3



SECTION A-A



SECTION B-B

TIDAL LEVELS	
HIGH TIDE LINE (HTL)	+4.1 FT
MEAN HIGHER WATER (MHW)	+2.7 FT
MEAN LOWER LOW WATER (MLLW)	+0.0 FT

PURPOSE:
SHEET PILE DOCK FOR EROSION
PROTECTION, NAVIGATION SAFETY,
AND FREIGHT TRANSFER.

DATUM: MLLW= 0.0
SEC.017 T8W R17W
LAT: 60.7784
LONG: -161.7786

SECTIONS

KNIK CONSTRUCTION CO. INC
6441 SOUTH AIRPARK PLACE
ANCHORAGE, AK 99502

01/31/14

**KNIK CONSTRUCTION
BETHEL YARD DOCK**

AT: BETHEL, AK
IN: KUSKOKWIM RIVER